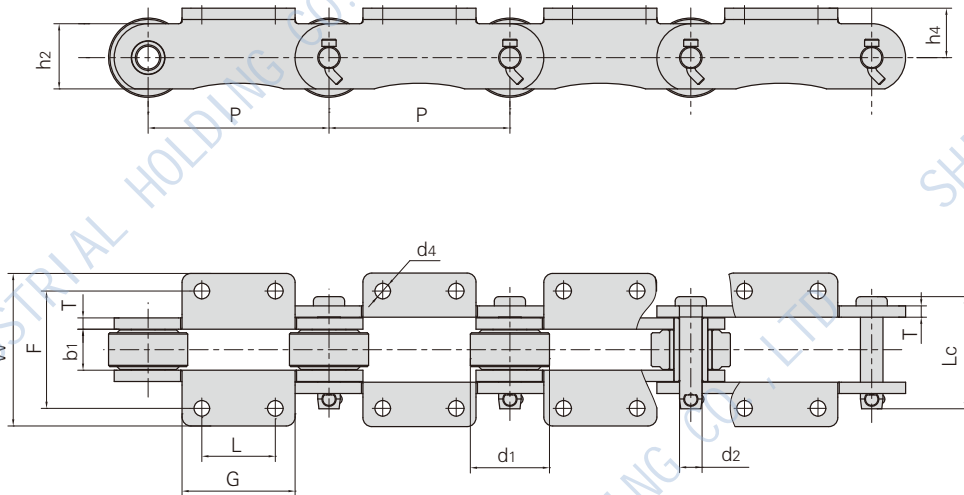


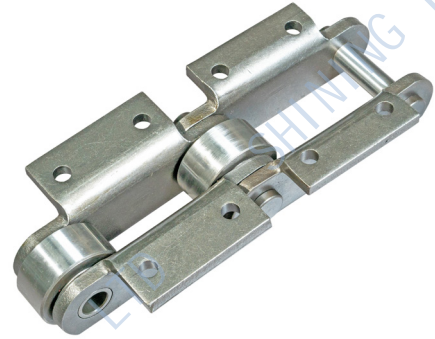
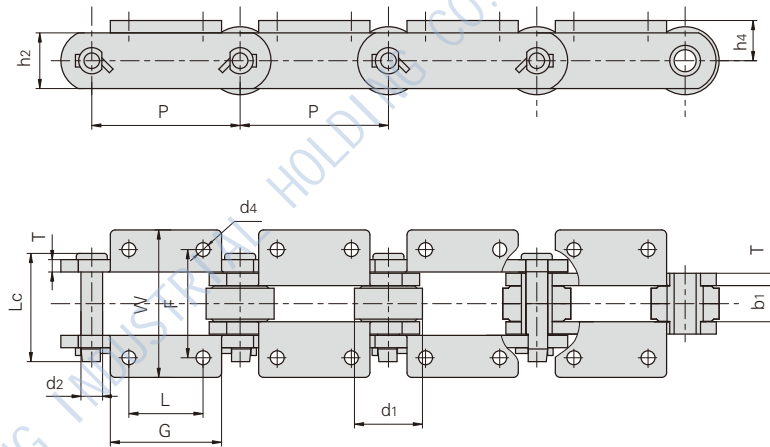
### 1.2.1 SUGAR CHAIN



Chain No.	Pitch	Roller Diameter	Width Between Inner Plates	Pin Diameter	Pin Length	Plate Depth	Plate Thickness	Tensile Strength	Average Tensile Strength	Weight Per Meter
	P	d1 max	b1 min	d2 max	Lc max	h2 max	T max	Q min	Qo	q
	mm	mm	mm	mm	mm	mm	mm	kN/lbf	kN	kg/m
P152.4K2	152.4	69.85	37.1	22.23	111.2	57.2	12.7	413/92842	455.0	26.5
P152.4K2	152.4	76.20	38.1	26.90	116.6	60.3	12.7	450/101160	495.0	30.7
P152.4K2	152.4	69.85	37.1	18.90	96.6	54.1	9.52	311/69913	345.0	24.68
P203.2K2	203.2	88.90	46.0	25.32	126.0	71.4	12.7	520/116900	545.0	37.7
P203.2K2	203.2	88.90	46.0	25.32	126.0	73.2	12.7	585/131513	614.0	35.9
P203.2K2	203.2	88.90	46.0	25.32	126.0	70.0	12.7	480/107908	504.0	37.6

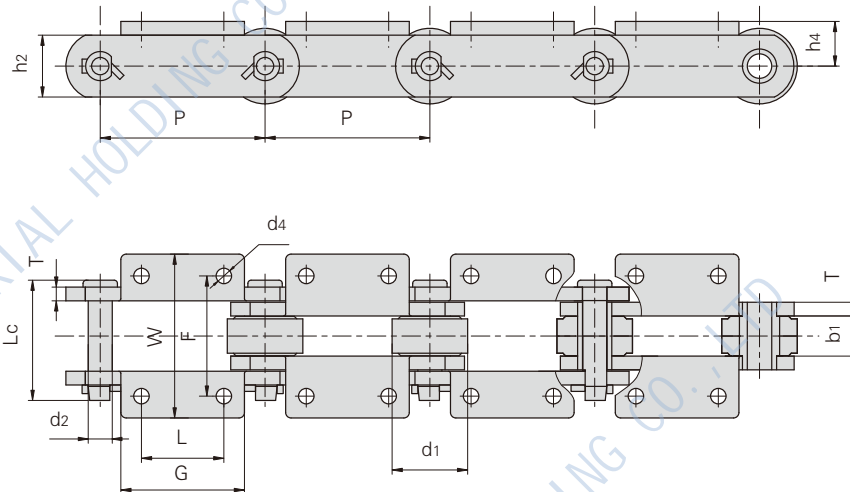
Chain No.	P	G	L	F	W	h4	d4
	mm	mm	mm	mm	mm	mm	mm
P152.4K2	152.4	114.3	76.2	111.10	151.5	41.30	14.30
P152.4K2	152.4	111.3	76.2	111.10	148.6	42.92	14.30
P152.4K2	152.4	139.7	76.2	111.20	169.1	41.40	14.20
P203.2K2	203.2	152.4	82.6	131.76	182.6	55.50	19.05
P203.2K2	203.2	127.0	82.6	131.76	171.4	55.50	17.50
P203.2K2	203.2	152.4	82.6	133.80	191.0	54.50	19.05

## 1.2.1 SUGAR CHAIN



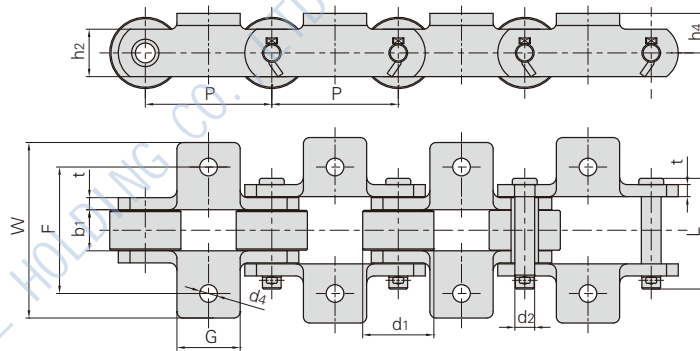
Chain No.	Pitch	Roller Diameter	Width Between Inner Plates	Pin Diameter	Pin Length	Plate Depth	Plate Thickness	Tensile Strength	Average Tensile Strength	Weight Per Meter
	P	d1 max	b1 min	d2 max	Lc max	h2 max	T max	Q min	Qo	q
	mm	mm	mm	mm	mm	mm	mm	kN/lbf	kN	kg/m
P150K2	150.00	85.00	55.00	23.90	128.00	70.00	12.00	450.0/101160	495.0	44.50
SH9063	152.40	76.20	38.10	23.83	103.20	61.00	10.30	445.0/100000	489.0	27.50
SH2198	152.40	69.85	38.10	22.23	111.20	57.15	12.70	404.5/91000	445.0	27.90
P152.4K2	152.40	69.85	37.60	22.23	97.10	57.20	9.52	376.0/84500	410.0	26.20
P152.4K2	152.40	9.85	37.60	22.23	97.10	57.20	9.52	400.0/89920	440.0	26.68
P152.4K2	152.40	69.85	37.10	21.85	108.00	57.20	12.70	413.0/92842	454.3	28.50
P152.4K2	152.40	76.20	38.10	23.83	103.20	60.30	10.30	438.0/98462	481.8	28.45
P152.4K2	152.40	76.20	37.60	22.23	97.10	57.20	9.52	376.0/84500	410.0	26.20
P152.4K2	152.40	76.20	39.40	28.58	115.90	69.85	12.70	390.0/87672	429.0	34.50
P152.4K2	152.40	50.80	30.00	11.10	69.00	38.10	6.40	80.0/17984	88.0	11.00
P152.4K2	152.40	69.90	38.10	22.23	112.80	57.20	12.70	450.0/101160	495.0	28.70
P152.4K2	152.40	76.20	38.10	27.00	112.00	60.50	12.70	400.0/89920	440.0	32.40
P152.4K2	152.40	69.85	37.80	19.05	97.20	50.80	9.70	285.0/64068	311.3	24.20
P152.4K2	152.40	76.20	38.10	22.23	100.00	57.20	9.50	350.0/78680	385.0	25.60
P203.2K2	203.20	88.90	45.30	25.40	123.00	71.40	12.70	615.0/138252	676.5	38.25
P203.2K2	203.20	107.95	92.10	38.10	170.00	88.90	12.70	760.0/170848	836.0	67.68
P203.2K2	203.20	88.90	46.00	25.40	120.90	69.90	12.70	444.8/99991	489.3	36.60
P228.6K2	228.60	76.00	42.00	22.23	104.00	64.00	10.00	400.0/89920	440.0	28.00
P304.8K2	304.80	101.60	69.85	34.80	163.80	88.90	16.00	1200.0/269760	1320.0	57.21

### 1.2.1 SUGAR CHAIN



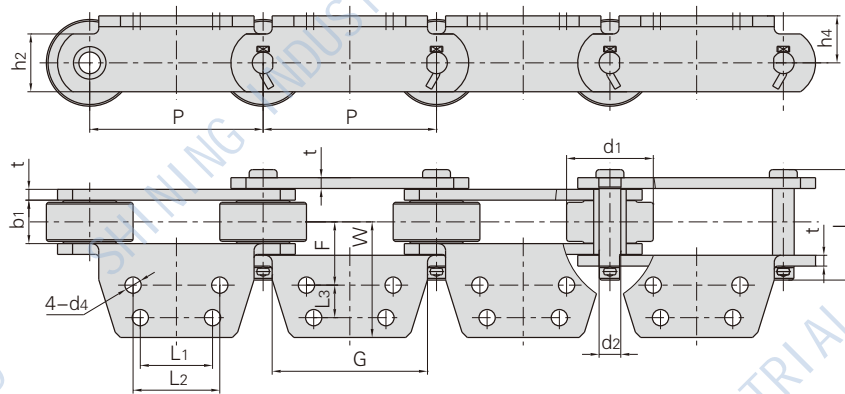
Chain No.	P	G	L	F	W	h4	d4
	mm	mm	mm	mm	mm	mm	mm
P150K2	150.00	95.00	55.00	155.00	233.00	55.00	15.00
SH9063	152.40	114.30	76.20	111.13	165.86	44.45	14.30
SH2198	152.40	114.30	76.20	111.25	152.40	41.40	14.30
P152.4K2	152.40	114.30	76.20	111.00	165.00	41.30	14.00
P152.4K2	152.40	114.30	76.20	111.00	165.00	41.30	13.00
P152.4K2	152.40	111.00	76.20	111.60	152.20	41.30	14.30
P152.4K2	152.40	114.30	76.20	111.40	165.00	44.50	14.30
P152.4K2	152.40	110.00	76.20	111.00	146.00	44.50	14.30
P152.4K2	152.40	108.00	76.20	111.10	147.60	50.80	14.30
P152.4K2	152.40	88.90	50.80	101.60	143.80	31.75	10.40
P152.4K2	152.40	111.30	76.20	111.30	146.10	41.10	14.20
P152.4K2	152.40	114.30	76.20	111.30	169.40	42.90	14.20
P152.4K2	152.40	136.70	76.20	111.20	152.40	41.10	14.20
P152.4K2	152.40	110.00	76.20	111.20	170.00	41.50	15.00
P203.2K2	203.20	165.00	114.30	132.00	183.00	55.50	17.50
P203.2K2	203.20	146.00	82.60	198.70	260.30	69.90	17.50
P203.2K2	203.20	127.00	82.60	131.80	183.40	55.60	17.50
P228.6K2	228.60	152.00	100.00	156.50	222.50	42.00	14.00
P304.8K2	304.80	203.20	152.40	203.20	257.80	69.85	17.50

## 1.2.1 SUGAR CHAIN



Chain No.	Pitch	Roller Diameter	Width Between Inner Plates	Pin Diameter	Pin Length	Plate Depth	Plate Thickness	Tensile Strength	Weight Per Meter
	P	d1 max	b1 min	d2 max	L max	h2 max	t max	Q min	q
	mm	mm	mm	mm	mm	mm	mm	kN/lbf	kg/m
P101.6 K1	101.60	57.15	33.00	15.90	88.90	38.10	9.70	176.4/39655	18.3

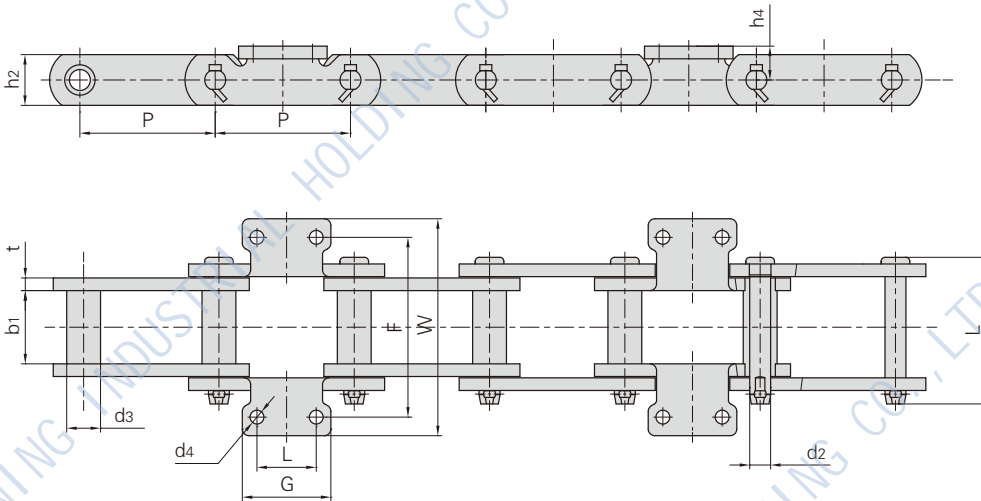
Chain No.	P	G	F	W	h4	d4
	mm	mm	mm	mm	mm	mm
P101.6 K1	101.60	50.80	101.60	141.00	31.75	14.20



Chain No.	Pitch	Roller Diameter	Width Between Inner Plates	Pin Diameter	Pin Length	Plate Depth	Plate Thickness	Tensile Strength	Weight Per Meter
	P	d1 max	b1 min	d2 max	L max	h2 max	t max	Q min	q
	mm	mm	mm	mm	mm	mm	mm	kN/lbf	kg/m
P152.4 A4	152.4	76.2	38.1	19.05	97.1	38.1	9.5	285.0/64068	23.0

Chain No.	P	G	F	W	h4	d4	L1	L2	L3
	mm	mm	mm	mm	mm	mm	mm	mm	mm
P152.4 A4	152.4	136.50	55.60	101.60	41.30	14.30	63.5	76.20	28.58

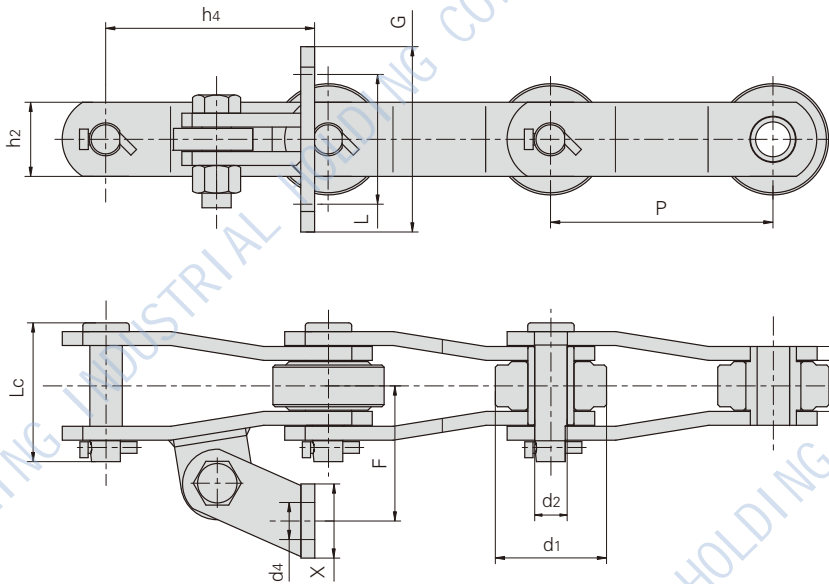
### 1.2.1 SUGAR CHAIN



Chain No.	Pitch	Roller Diameter	Width Between Inner Plates	Pin Diameter	Pin Length	Plate Depth	Plate Thickness	Tensile Strength	Weight Per Meter
	P	d1 max	b1 min	d2 max	L max	h2 max	t max	Q min	q
	mm	mm	mm	mm	mm	mm	mm	kN/lbf	kg/m
SH102B/K2	101.60	25.40	54.00	15.70	110.50	38.10	9.50	160.0/35968	11.25
SH52.4/K2	152.40	36.58	66.50	19.05	126.00	58.80	9.70	330.0/74184	17.26

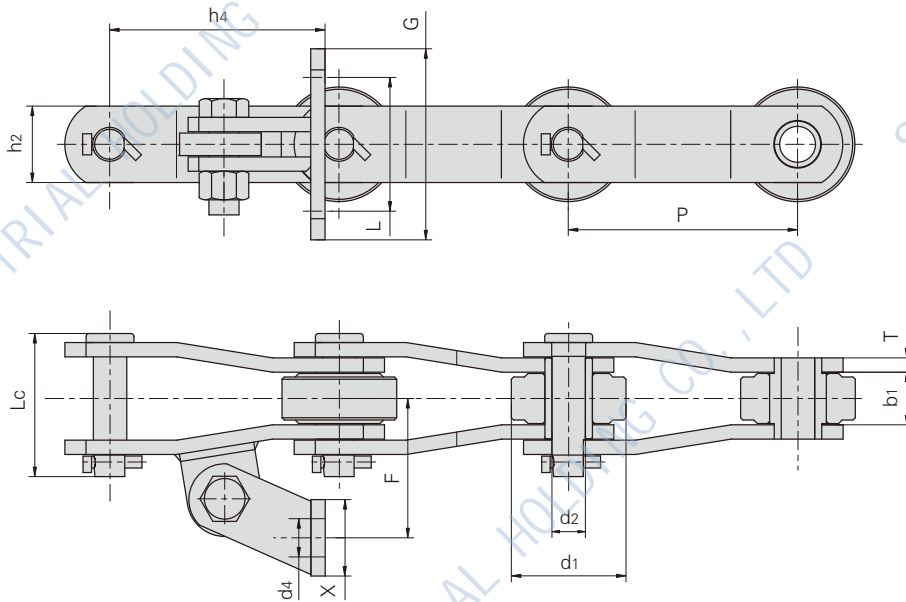
Chain No.	P	G	L	F	W	h4	d4
	mm	mm	mm	mm	mm	mm	mm
SH102B/K2	101.60	66.50	44.50	134.90	162.80	25.40	10.40
SH52.4/K2	152.40	114.30	58.70	158.75	212.85	38.10	13.50

## 1.2.1 SUGAR CHAIN



Chain No.	Pitch	Roller Diameter	Width Between Inner Plates	Pin Diameter	Pin Length	Plate Depth	Plate Thickness	Tensile Strength	Average Tensile Strength
	P mm	d1 max mm	b1 min mm	d2 max mm	L max mm	h2 max mm	T max mm	Q min kN/lbf	Qo kN
P101.6	101.60	50.80	33.28	17.45	77.00	38.10	8.00	160.0/35968	176.0
P101.6	101.60	50.80	32.60	17.50	83.00	44.50	7.90	138.1/31045	155.0
P152.4	152.40	76.20	34.50	22.23	95.10	50.80	9.52	263.0/59122	290.0
P152.4	152.40	76.20	38.10	23.83	103.20	60.30	10.30	438.0/98462	485.0
P152.4	152.40	76.20	39.80	23.83	113.00	63.50	12.70	453.6/101834	450.0
P152.4	152.40	70.00	34.60	22.23	95.80	57.00	10.00	263.0/59122	290.0
P152.4	152.40	72.00	34.96	18.85	73.80	50.80	9.52	250.0/56200	275.0
P152.4	152.40	76.20	38.10	22.23	97.10	57.20	9.52	362.0/81377	400.0
P152.4	152.40	76.20	34.90	22.20	96.35	55.80	9.50	362.6/81512	400.0
P152.4	152.40	76.20	37.00	24.00	110.00	64.00	12.00	600.0/134880	660.0
P152.4	152.40	76.20	34.96	22.23	97.50	50.80	9.53	328.0/73734	380.0
P152.4	152.40	76.20	38.90	23.75	111.50	63.50	12.70	445.4/100126	490.0
P203.2	203.20	88.90	46.00	25.40	118.20	69.90	12.70	615.0/138252	680.0
P203.2	203.20	88.90	41.30	30.16	130.00	69.90	15.00	700.0/157360	770.0
P203.2	203.20	89.00	46.10	25.40	125.00	76.20	12.70	700.0/157360	770.0
P203.2	203.20	88.90	46.10	25.40	123.00	70.00	12.70	620.0/139376	690.0

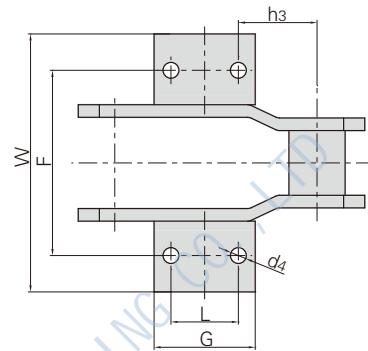
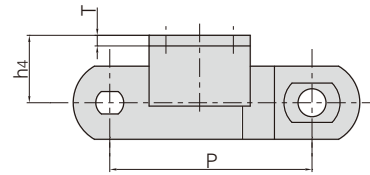
1.2.1 SUGAR CHAIN



Chain No.	P	G	L	F	X	h4	d4
	mm	mm	mm	mm	mm	mm	mm
P101.6	101.60	120.65	69.85	85.85	50.80	90.93	14.70
P101.6	101.60	111.00	84.10	74.60	44.50	80.90	11.10
P152.4	152.40	127.00	88.90	92.10	50.80	143.00	14.20
P152.4	152.40	127.00	88.90	100.00	50.80	143.00	14.20
P152.4	152.40	127.00	89.00	105.00	63.50	121.40	15.00
P152.4	152.40	122.00	84.00	95.84	50.00	113.20	14.00
P152.4	152.40	127.00	81.00	114.67	50.80	127.00	15.00
P152.4	152.40	127.10	88.90	92.10	50.80	143.00	14.30
P152.4	152.40	127.00	88.90	93.65	50.80	142.85	14.20
P152.4	152.40	127.00	89.00	97.00	50.80	142.80	14.00
P152.4	152.40	127.00	88.90	92.10	50.80	130.55	14.20
P152.4	152.40	127.00	88.90	104.60	50.80	130.00	14.20
P203.2	203.20	127.00	88.90	107.10	50.80	168.40	14.20
P203.2	203.20	127.00	88.90	107.18	50.80	168.40	14.30
P203.2	203.20	127.00	88.90	107.10	50.80	168.40	14.20
P203.2	203.20	127.00	88.90	107.10	50.80	168.30	14.20

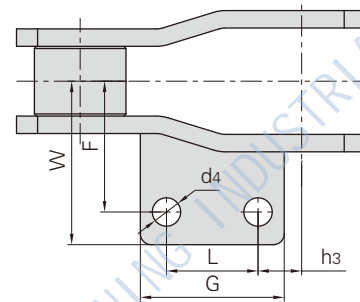
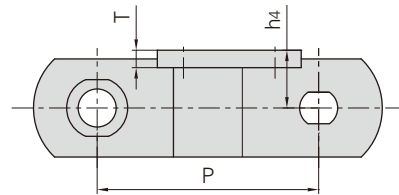
## 1.2.1 SUGAR CHAIN

**With welded K2 attachment**



Chain No.	P	G	W	L	G	h3	h4	d4	T
	mm	mm	mm	mm	mm	mm	mm	mm	mm
P228.6 K2	228.6	209.6	291.3	76.2	114.3	88.9	76.2	18.0	12.0

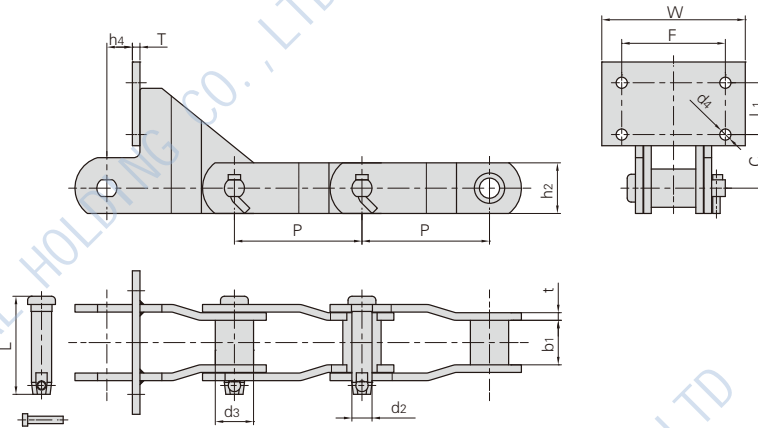
**With welded K2 attachment**



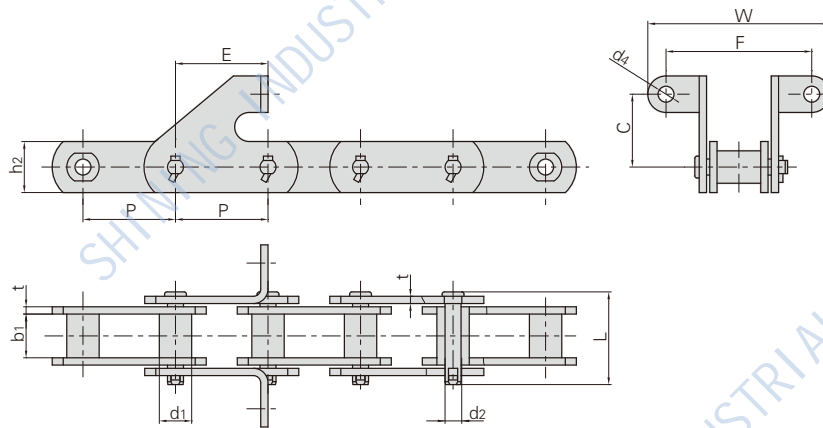
Chain No.	P	G	W	L	G	h3	h4	d4	T
	mm	mm	mm	mm	mm	mm	mm	mm	mm
P228.6 K2	228.6	209.6	291.3	76.2	114.3	88.9	76.2	18.0	12.0



### 1.2.1 SUGAR CHAIN

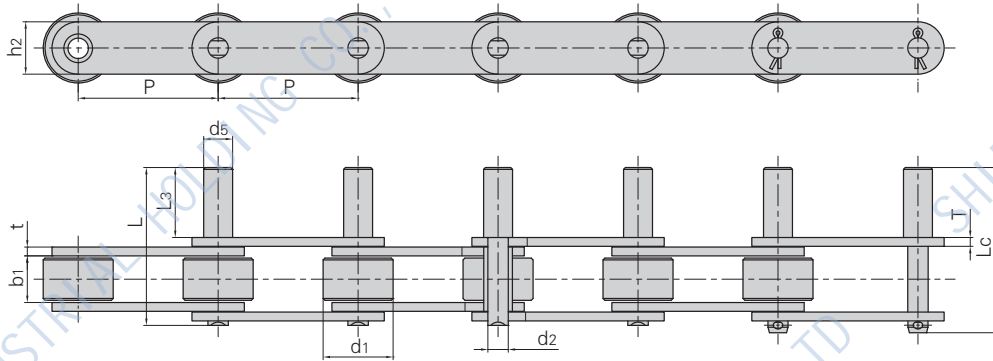


Chain No.	Pitch	Bush Diameter	Width Between Inner Plates	Pin Diameter		Plate Dimension		Attachment Dimension					Tensile Strength	
	P	d3 max	b1 min	d2 max	L max	h2	t/T	F	W	h4	d4	C	L1	Q
	mm	mm	mm	mm	mm	mm	mm	mm	mm	mm	mm	mm	mm	kN/lbf
P160	160.0	48.0	55.7	25.27	123.03	63.5	9.5	130.0	180.0	32.0	14.0	132.3	65.0	400/89920
P200	200.0	48.0	55.7	25.27	123.03	63.5	9.5	120.0	158.8	76.2	14.0	91.0	50.0	350/78680

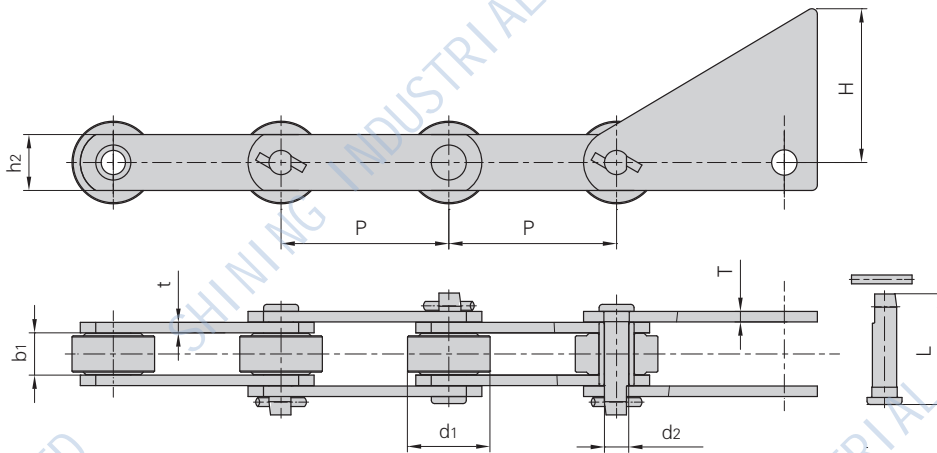


Chain No.	Pitch	Roller Diameter	Width Between Inner Plates	Pin Diameter	Pin Length	Plate Depth	Plate Thickness	Attachment Dimension					Tensile Strength
	P	d1 max	b1 min	d2 max	L max	h2 max	t max	F	W	d4	C	E	Q
	mm	mm	mm	mm	mm	mm	mm	mm	mm	mm	mm	mm	kN/lbf
P63.5	63.5	22.22	30.0	11.0	63.5	35.0	5.0	100	125	11	35	63.5	80/17984
P72.6	72.6	22.22	25.4	11.0	59.0	35.0	5.0	93	118	11	50	76.2	100/22480

## 1.2.1 SUGAR CHAIN



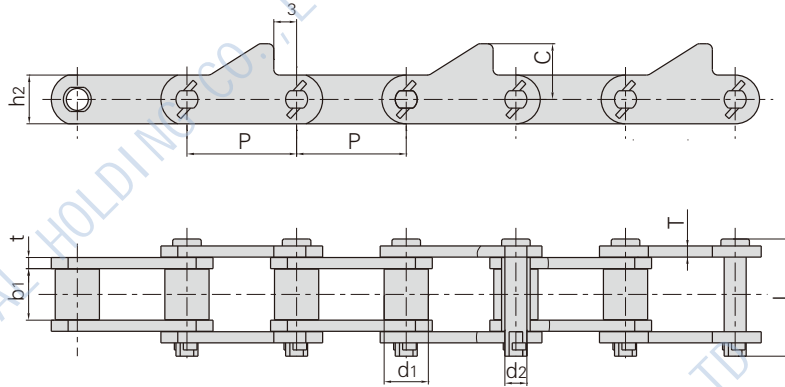
Chain No.	Pitch	Roller Diameter	Width Between Inner Plates	Pin Diameter					Plate Dimension		Tensile Strength	Weight Per Meter
	P	d1 max	b1	d2 max	d5 max	L max	Lc max	L3	h2	t/T	Q min	q
	mm	mm	mm	mm	mm	mm	mm	mm	mm	mm	kN/lbf	Kg/m
P76.2	76.2	38.1	25.2	11.1	15.75	86.0	90.1	38.1	28.5	4.8	58/3038	6.3



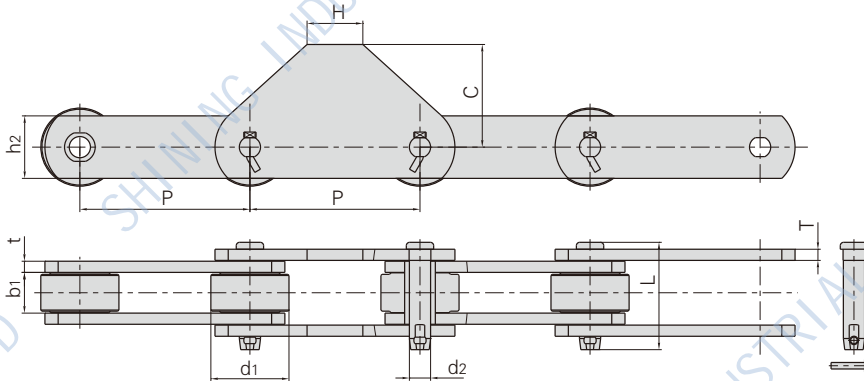
Chain No.	Pitch	Roller Diameter	Width Between Inner Plates	Pin Diameter		Plate Dimension			Tensile Strength
	P	d1 max	b1	d2 max	L max	h2	t/T	H	Q min
	mm	mm	mm	mm	mm	mm	mm	mm	kN/lbf
P100	100.0	56.00	30.0	16.00	76.0	45.0	8.00	100.0	240/53952
P101.6★	101.6	25.40	54.0	15.70	110.5	38.1	9.50	95.3	160/35968
P120.9★	120.9	36.58	66.5	19.05	126.0	50.8	9.70	50.8	214/48107
P52.4★	152.4	75.00	38.4	22.08	100.4	50.8	9.53	139.7	260/58448

★Bush chain: d1 in the table indicates the external Diameter of the bush.

**1.2.1 SUGAR CHAIN**



Chain No.	Pitch	Roller Diameter	Width Between Inner Plates	Pin Diameter		Plate Dimension				Tensile Strength	Weight Per Meter
	P	d1 max	b1	d2 max	L max	h2	t/T	h3	c	Q min	q
	mm	mm	mm	mm	mm	mm	mm	mm	mm	kN/lbf	Kg/m
P78.11	78.11	32.60	37.0	15.90	89.0	38.0	8.0	11.6	58.0	190/42715	12.2
P78.75	78.75	31.75	37.0	15.88	87.0	38.0	8.0	16.4	41.0	140/31472	10.9



Chain No.	Pitch	Roller Diameter	Width Between Inner Plates	Pin Diameter		Plate Dimension				Tensile Strength
	P	d1 max	b1	d2 max	L max	h2	t/T	c	H	Q min
	mm	mm	mm	mm	mm	mm	mm	mm	mm	kN/lbf
P152.4	152.4	70.0	36.5	17.0	96.2	55.0	10.0	92.0	50.0	380/85424